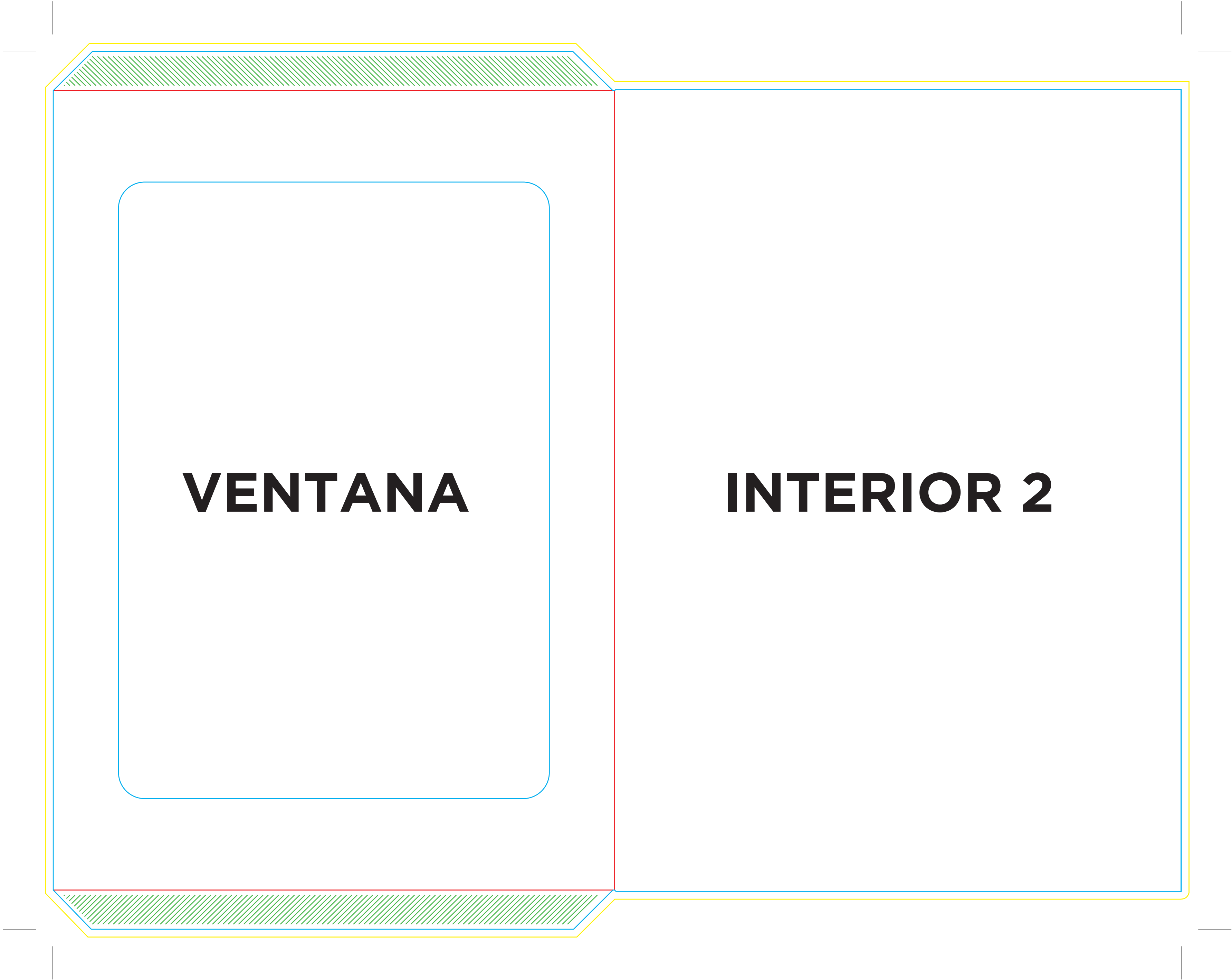







**PIEZA 1 EXTERIOR**



**i** CARTAS RESTAURANTE CON BOLSILLO A4 V2

El documento debe incluir un sangrado de 3 mm e imágenes a 300 ppp.

Tamaño interior: 214X307 mm Tamaño Exterior: 215X307 mm

-  Sangrado necesario.
-  Zona máxima de diseño.
-  Hendido.
-  Semicorte.
-  Zona no visible.






**PIEZA 2 EXTERIOR**



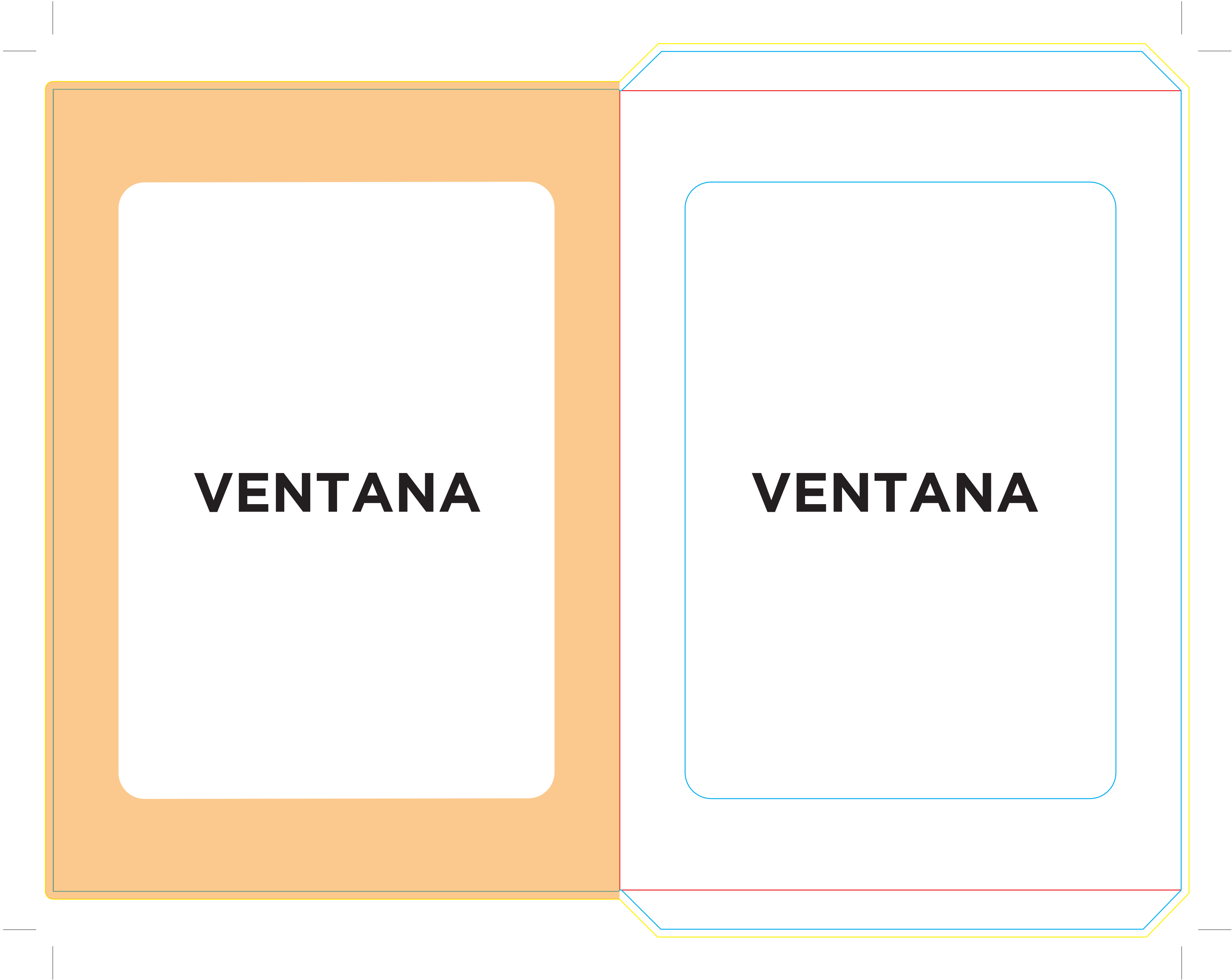
**i** CARTAS RESTAURANTE CON BOLSILLO A4 V2

El documento debe incluir un sangrado de 3 mm e imágenes a 300 ppp.

Tamaño interior: 214X307 mm Tamaño Exterior: 215X307 mm

-  Sangrado necesario.
-  Zona máxima de diseño.
-  Hendido.
-  Semicorte.
-  Zona no visible.






**PIEZA 1 INTERIOR**



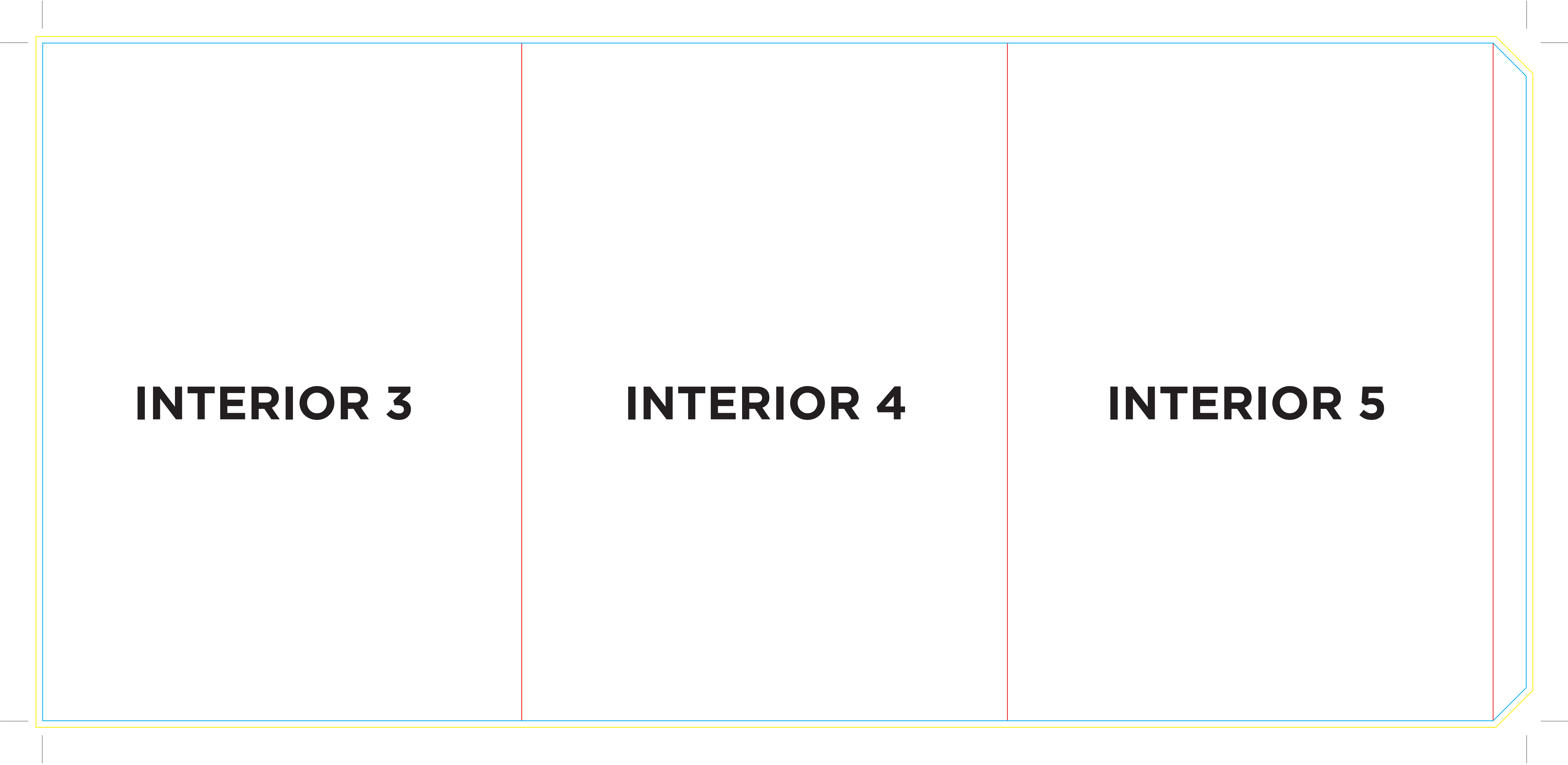
**i** CARTAS RESTAURANTE CON BOLSILLO A4 V2

El documento debe incluir un sangrado de 3 mm e imágenes a 300 ppp.

Tamaño interior: 214X307 mm Tamaño Exterior: 215X307 mm

-  Sangrado necesario.
-  Zona máxima de diseño.
-  Hendido.
-  Semicorte.
-  Zona no visible.






**PIEZA 2 INTERIOR**



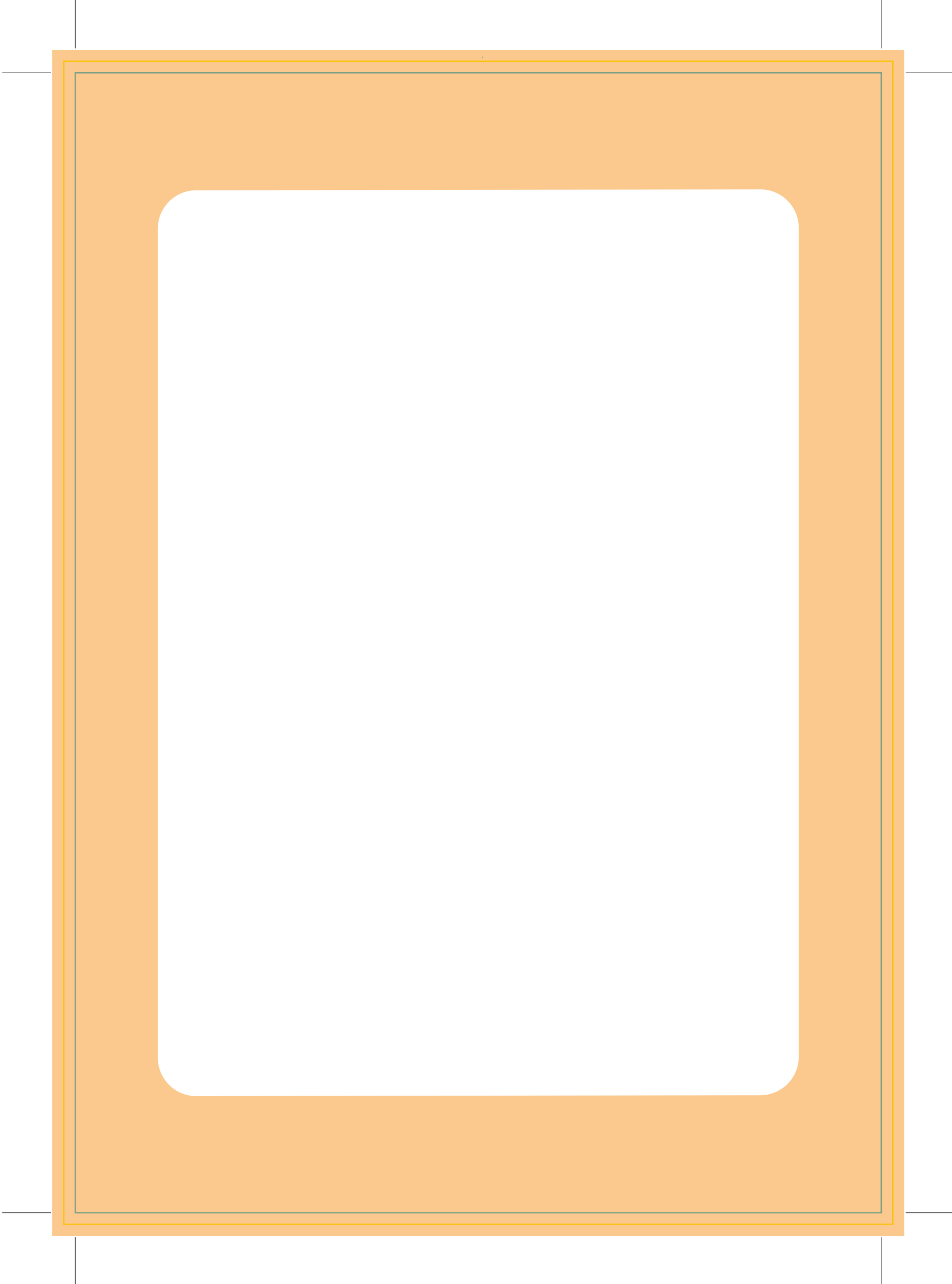
**i** CARTAS RESTAURANTE CON BOLSILLO A4 V2

*El documento debe incluir un sangrado de 3 mm e imágenes a 300 ppp.*

*Tamaño interior: 214X307 mm Tamaño Exterior: 215X307 mm*

-  Sangrado necesario.
-  Zona máxima de diseño.
-  Hendido.
-  Semicorte.
-  Zona no visible.






# HOJA LATERAL



**i** CARTAS RESTAURANTE CON BOLSILLO A4 V2

El documento debe incluir un sangrado de 3 mm e imágenes a 300 ppp.

Tamaño interior: 214X307 mm Tamaño Exterior: 215X307 mm

-  Sangrado necesario.
-  Zona máxima de diseño.
-  Hendido.
-  Semicorte.
-  Zona no visible.